

READ THESE INSTRUCTIONS THOROUGHLY BEFORE INSTALLATION KEEP THESE INSTRUCTIONS FOR FUTURE REFERENCE.

IMPORTANT:

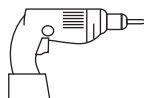
This product must be installed by a qualified electrician or competent person, and in accordance with current building and IET wiring regulations.

BOX CONTENTS

This lighting fixture has been properly packed to avoid damage during transit. Before commencing with the installation carefully inspect the luminaire to confirm there is no damage. DO NOT INSTALL if any damage has occurred to the fixture or any of its components.

- Light Fitting
- Instruction Manual

TOOLS REQUIRED



- Drill



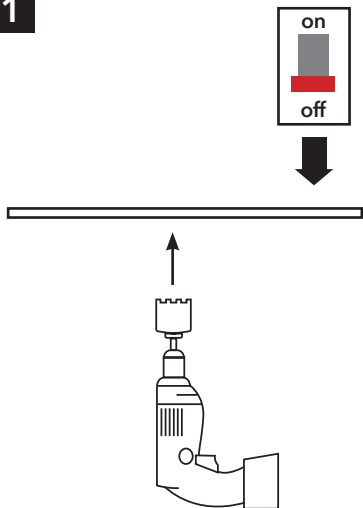
- Screwdriver



- Cable

INSTALLATION INSTRUCTIONS

1



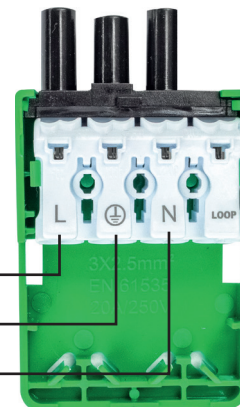
2

Electrical connection wiring

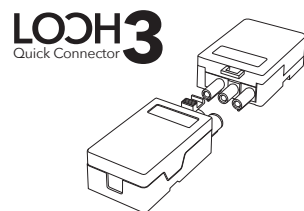
LIVE (L) = Brown

Earth (⊕) = Yellow/Green

NEUTRAL (N) = Blue



3

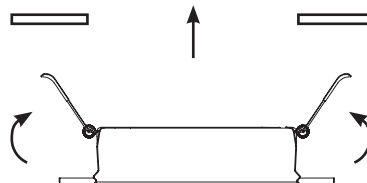


TWIST & LOCK Jack Connector

CAUTION

Do not hot plug when live.

4



5



PLEASE READ THESE INSTRUCTIONS BEFORE INSTALLATION.



WARNING: Risk of electric shock! Isolate the mains power before proceeding.

- Turn off the mains power before performing inspections, installation, or removal
- Verify that the supply voltage is correct by comparing it with the luminaire label information
- It is the installers responsibility to ensure installation is suitable for the total load of the luminaire(s). The supply cable, fuses/circuit breakers must be correctly rated for the electrical load and considering for any transient inrush currents that may occur
- Do not perform insulation strength or resistance tests on installed luminaire(s) connected

1. Disconnect the main power supply and cut your required size mounting hole.
(See reverse for correct size)
3. Connect mains cable to Loch3 connector supplied as per wiring diagram
3. Connect the Loch3 connector together ensuring the driver is connected to the light fitting via the jack plug supplied as per wiring diagram
4. Fit the downlight into drilled hole by lifting the fixing levers
5. Re-connect the mains supply

DO NOT COVER PRODUCT OR CONTROL GEAR WITH INSULATION OR OTHER MATERIALS

DISPOSAL

Disassembly instructions for end of life disposal available on website.

Disposal of Electronic Equipment WEEE Directive 2002/96/EC This product falls within the scope of the Waste Electrical & Electronic Equipment Directive (WEEE), which means the product should not be disposed of as normal household waste. Please recycle where facilities exist or check with your Local Authority. RoHS - All components and materials used in this product are RoHS 2002/95/EC compliant.

Specifications may change from time to time. The information contained in this leaflet is for guidance only and should not be considered as always accurate and should be treated as not representative.

WARRANTY

This luminaire is warranted for a period of 5 years from the date of purchase.** The backup battery pack in the emergency version is warranted for a period of 24 months. The warranty could be invalidated should the light fitting not be installed according to these instructions, outside the scope of the specification or the product has been altered or tampered with in any way. Please see website for terms and conditions.

PRODUCT TEMP SPECIFICATION

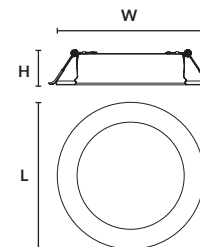
Standard 0 to +45°C

Emergency 0 to +30°C

Revision 1.0 - September 2022

WESTON DOWNLIGHT DIMENSIONS

Part No.	Description	Watts	L (mm)	W (mm)	H (mm)	Hole Cut-Out	Weight
430725	Weston Backlit Downlight TP (a) - White	7W	90	90	30	75mm	100g
430726	Weston Backlit Downlight TP (a) - White	10W	120	120	30	95mm	128g
430727	Weston Backlit Downlight TP (a) - White	15W	145	145	30	115mm	155g
430728	Weston Backlit Downlight TP (a) - White	20W	185	185	30	155mm	225g
430729	Weston Backlit Downlight TP (a) - White	24W	220	220	30	180mm	375g



For emergency wiring, please see emergency pack instruction manual

This product contains a light source of energy efficiency Class E & F.

Technical Helpline: +44 (0)1507 328031

** Please see our website for more detailed information on warranty.